

---

---

## Certificate of Analysis

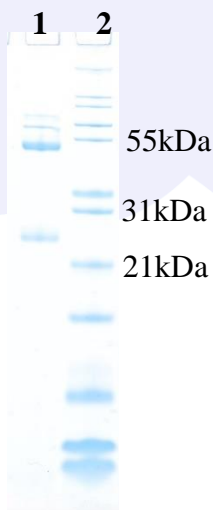
Product:	Goat anti-Human IgE ( $\epsilon$ chain), Biotin Conjugate
Part Number:	GtxHu-002-EBIO
Lot Number:	62-89-060118
Amount:	1.0 mg of antibody at 1.50 mg/ml ( $E^{1\%}$ at 280 nm = 13.0)
Purification:	Antibody was purified using solid phase Human IgE
Purity:	Affinity purified antibody is $\geq 95\%$ based on SDS-PAGE
Host:	Goat
Immunogen:	Purified Human IgE ( $\epsilon$ chain)
Buffer:	10 mM Sodium Phosphate, 0.15 M Sodium Chloride, pH 7.2, 1 % (w/v) BSA, Protease/IgG free
Preservative:	0.05 % (w/v) Sodium Azide
Storage:	2 - 8 °C
Shelf Life:	1 year from date of receipt
Specificity:	Based on IEP, this antibody reacts with: <ul style="list-style-type: none"><li>• heavy (<math>\epsilon</math>) chains on Human IgE</li></ul>
Cross Reactivity:	Based on IEP, no reactivity is observed to: <ul style="list-style-type: none"><li>• light chains on all Human immunoglobulins</li><li>• non-immunoglobulin Human serum proteins</li><li>• serum proteins from Bovine, Mouse, or Rabbit</li></ul>
Country of Origin:	Goat serum was obtained from healthy animals of US origin and under the care of a registered veterinarian.
Note:	This conjugate was prepared using Part # GtxHu-002-E, Lot # 58-116-032818
Applications:	This conjugate is suitable for use in: ELISA, WB, IHC, FACS. The optimal working dilution should be determined by the investigator. Suggested starting dilution(s): <ul style="list-style-type: none"><li>• 1:20,000 – 1:500,000 for ELISA/Western blot</li><li>• 1:500 – 1:5,000 for Immunohistochemistry</li></ul>
Disclaimer:	<i>For in vitro Laboratory Use Only.</i> Not for diagnostic or therapeutic use. Not for human or animal consumption. The proper selection and use of our products is the sole responsibility of the end user, and therefore we can offer no guarantee to a specific experimental outcome. Suggested applications of our products are not recommendations to use our products in violation of any patent or as a license under any patent of ImmunoReagents, Inc. <b>Product may not be resold or modified for resale without prior written approval of ImmunoReagents, Inc.</b>

## Testing Results

**PRODUCT:** Goat anti-Human IgE (ε chain), Biotin Conjugate  
**PART NUMBER:** GtxHu-002-EBIO  
**LOT NUMBER:** 62-89-060118

<u>TESTS</u>	<u>SPECIFICATIONS</u>	<u>RESULTS</u>
Appearance:	Clear, colorless liquid	PASS
Purity:	Two predominant bands at 50 and 24 kDa based on SDS-PAGE	PASS
Specificity:	Based on IEP, this antibody has precipitin bands with: <ul style="list-style-type: none"> <li>• heavy (ε) chains on Human IgE</li> </ul>	PASS
Cross Reactivity:	Based on IEP, no precipitin bands are observed to:	
	• light chains on all Human immunoglobulins	PASS
	• non-immunoglobulin Human serum proteins	PASS
	• serum proteins from Bovine, Mouse, or Rabbit	PASS
ELISA:	Dilution giving A <sup>405</sup> reading of ≥ 1.0 when tested against Human IgE (ε chain) coated at 2 µg/ml	320,000

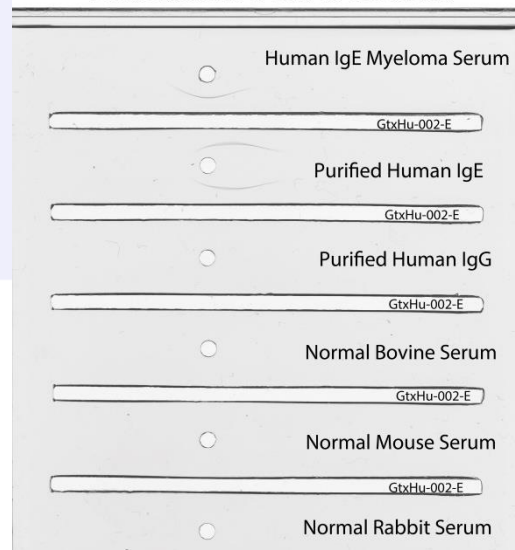
### SDS-PAGE



- 1) GtxHu-002-E, Lot # 58-116-032818
- 2) Mol Weight Standard

### Immuno-electrophoresis (IEP)

Part # GtxHu-002-E Lot # 58-116-032818



Date: June 11, 2018

Signature: \_\_\_\_\_

Quality Control